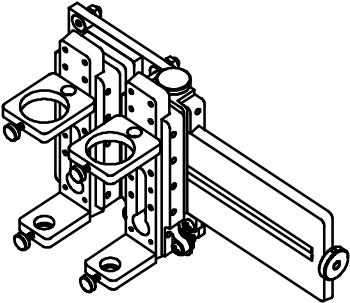


PROPRIETARY NOTICE
THIS DRAWING IS EFD PROPERTY, CONTAINS PROPRIETARY INFORMATION AND MUST BE RETURNED UPON REQUEST. DO NOT CIRCULATE, REPRODUCE OR DIVULGE TO OTHER PARTIES WITHOUT THE WRITTEN CONSENT OF EFD.

REVISIONS						
ZONE	REV.	DESCRIPTION	BY	CHK	RELEASE NO.	DATE
	A01	ORIGINAL RELEASE	JT		DR6238	2/26/2004

REMOVE FROM
A913 AND DISCARD



COMPLETED ASSEMBLY

NOTES:
1.

ITEM NO.	PART NUMBER	DESCRIPTION	QUAN.
1	700621-03	BARREL BUSHING, 3CC	1
2	700621-05	BARREL BUSHING, 5CC	1
3	700621-10	BARREL BUSHING, 10CC	1
4	700813-1	MOUNTING PLATE-DB02/DB03	1
5	700813-2	SPACER PLATE-DB02/DB03	1
6	A913	DUAL BRACKET, DB02	1
7	A916	DV-01 BARREL BRACKET	2
8	HM5	NUT - HEX, M5	4
9	HM5X16MM-FH	SCREW - M5X16MM, FH, SS	4
10	HW4-40X3/4	SCREW-PHILLIPS MS FH SS	4

ENGLISH
ALL DIMENSIONS IN INCHES
EXCEPT AS NOTED

EFD
A SCREW COMPANY

977 WATERMAN AVE.
EAST PROVIDENCE
RHODE ISLAND 02914

UNLESS OTHERWISE NOTED

INTERPRET DRAWING PER
ASME Y14.5M-1994

PERFECT FORM AT MMC REQUIRED FOR
INTERRELATED FEATURES

STANDARD TOLERANCES
XXX = ±.010 XXX = ±.04
XXX = ±.005 ANGULAR = .5°

BREAK ALL CORNERS .005/.030

THREAD LENGTH DIMENSIONS ARE
FULL THREAD

MACHINED SURFACES: 12.5

THIRD ANGLE
PROJECTION

ORIGINAL RELEASE
REVISED NO:
DR6238

DRAWN BY:
JT

DATE:
2/26/04

CHECKED BY:

APPROVED BY:

SCALE:
1:2

SIZE PART NO.
C 700840

REV
A01

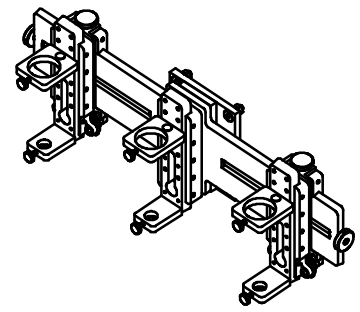
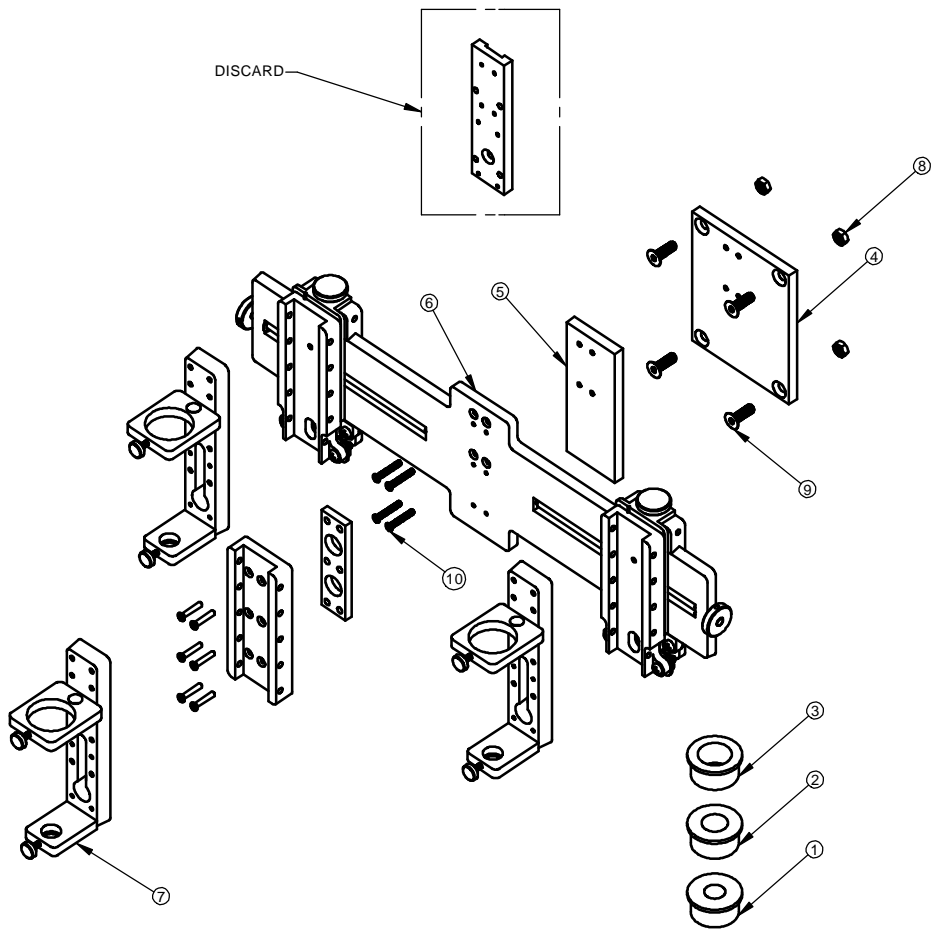
SHEET 1 OF 1

4 3 2 1

PROPRIETARY NOTICE

THIS DRAWING IS EFD PROPERTY, CONTAINS PROPRIETARY INFORMATION AND MUST BE RETURNED UPON REQUEST. DO NOT CIRCULATE, REPRODUCE OR DIVULGE TO OTHER PARTIES WITHOUT THE WRITTEN CONSENT OF EFD.

REVISIONS					
ZONE	REV.	DESCRIPTION	BY	CHK	RELEASE NO.
	A01	INITIAL RELEASE	JT		2/26/2004



NOTES:
1.

ITEM NO.	PART NUMBER	DESCRIPTION	QUAN.
1	700621-03	BARREL BUSHING, 3CC	3
2	700621-05	BARREL BUSHING, 5CC	3
3	700621-10	BARREL BUSHING, 10CC	3
4	700813-1	MOUNTING PLATE-DB02/DB03	1
5	700813-2	SPACER PLATE-DB02/DB03	1
6	A914	TRIPLE BRACKET, DB03	1
7	A916	DV-01 BARREL BRACKET	3
8	HM5	NUT - HEX, M5	4
9	HM5X16MM-FH	SCREW - M5X16MM, FH, SS	4
10	HW4-40X3/4	SCREW-PHILLIPS MS FH SS	4

ENGLISH
ALL DIMENSIONS IN INCHES
EXCEPT AS NOTED

UNLESS OTHERWISE NOTED

- INTERPRET DRAWING PER ASME Y14.5M-1994
- PERFECT FORM AT MMC REQUIRED FOR INTERRELATED FEATURES
- STANDARD TOLERANCES:
 - XXX = ±.010
 - XXX = ±.005
 - XXX = ±.002
 - XXX = ±.001
 - XXX = ±.0005
 - XXX = ±.0002
 - XXX = ±.0001
- BREAK ALL CORNERS .005/.003
- THREAD LENGTH DIMENSIONS ARE FULL THREAD
- MACHINED SURFACES: 125
- THIRD ANGLE PROJECTION

EFD
A SCREW COMPANY

977 WATERMAN AVE.
EAST PROVIDENCE
RHODE ISLAND 02914

TRIPLE BARREL MOUNTING KIT

DATE: 2/26/04
CHECKED BY: JT
APPROVED BY: JT

SCALE: 1:2

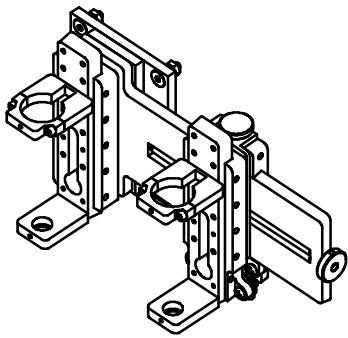
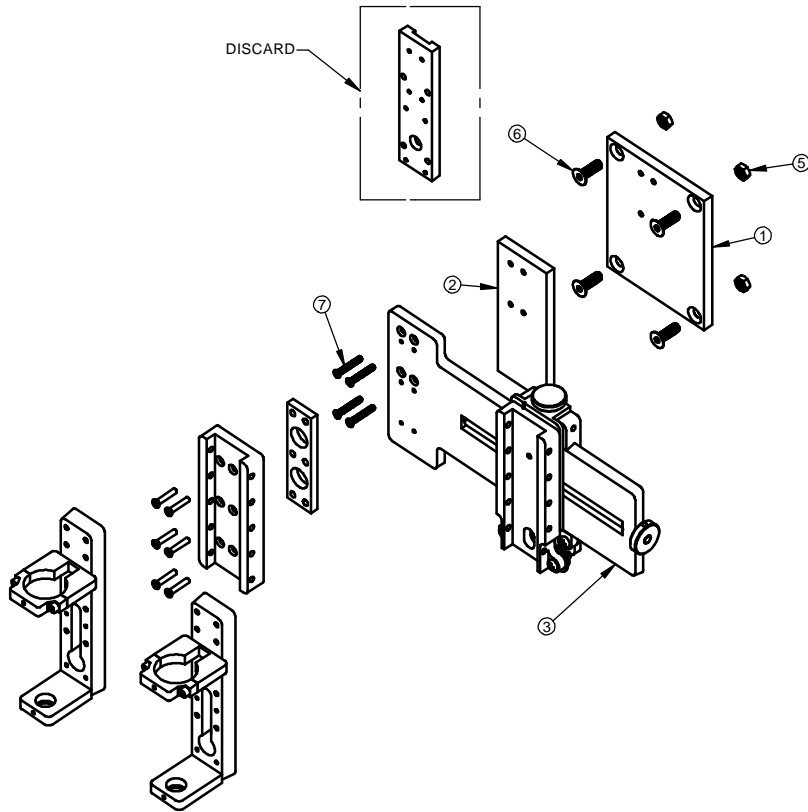
SIZE	PART NO.	REV.
C	700841	A01

SHEET 1 OF 1

4 3 2 1

PROPRIETARY NOTICE THIS DRAWING IS EFD PROPERTY, CONTAINS PROPRIETARY INFORMATION AND MUST BE RETURNED UPON REQUEST. DO NOT CIRCULATE, REPRODUCE OR DIVULGE TO OTHER PARTIES WITHOUT THE WRITTEN CONSENT OF EFD.

REVISIONS					
ZONE	REV.	DESCRIPTION	BY	CHK	RELEASE NO.
	A01	NEW DRAWING RELEASE	JT		DR
					DATE
					2/27/2004



COMPLETED ASSEMBLY

NOTES:
1.

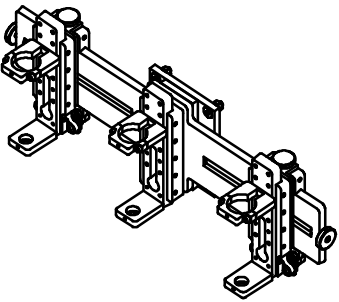
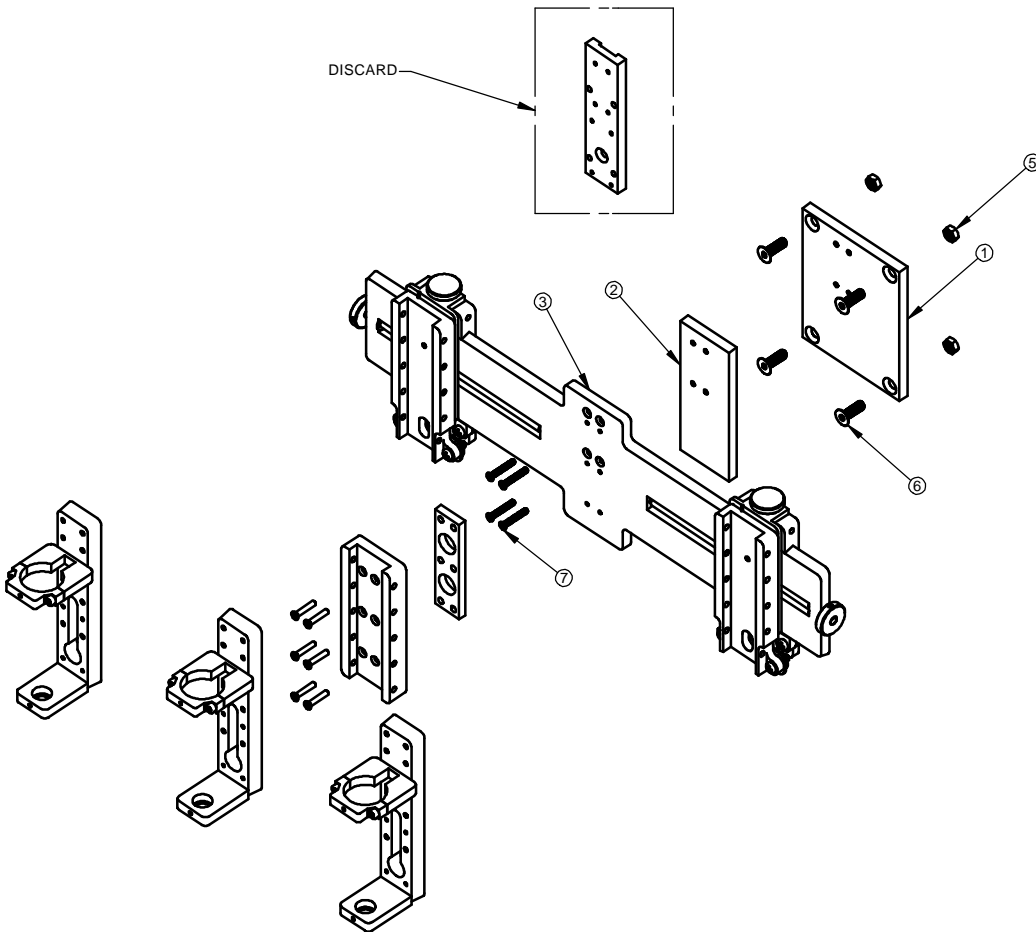
ITEM NO.	PART NUMBER	DESCRIPTION	QUAN.
1	700813-1	MOUNTING PLATE-DB02/DB03	1
2	700813-2	SPACER PLATE-DB02/DB03	1
3	A913	DUAL BRACKET, DB02	1
4	A915	VALVE PLATE, 03-0234-01	2
5	HM5	NUT - HEX, M5	4
6	HM5X16MM-FH	SCREW - M5X16MM, FH, SS	4
7	HW4-40X3/4	SCREW-PHILLIPS M5 FH SS	4

ENGLISH		EFD®		977 WATERMAN AVE.	
ALL DIMENSIONS IN INCHES EXCEPT AS NOTED		EAST PROVIDENCE		RHODE ISLAND 02914	
UNLESS OTHERWISE NOTED		ORIGINAL RELEASE RELEASED BY DR DRAWN BY DATE: 2/27/04		DUAL VALVE MOUNTING KIT	
* INTERPRET DRAWING PER ASME Y14.5M-1994		CHECKED BY:			
* PERFECT FORM AT MMC REQUIRED FOR INTERRELATED FEATURES		APPROVED BY:			
* STANDARD TOLERANCES XX = ±.010 XXX = ±.005 * BREAK ALL CORNERS .005 / .030 * THREAD LENGTH DIMENSIONS ARE FULL THREAD * MACHINED SURFACES: 125		SIZE PART NO. C 700842			
THIRD ANGLE PROJECTION		SCALE: 1:2		REV A01	
		SHEET 1 OF 1			

4 1 3 2 1

PROPRIETARY NOTICE THIS DRAWING IS EFD PROPERTY, CONTAINS PROPRIETARY INFORMATION AND MUST BE RETURNED UPON REQUEST. DO NOT CIRCULATE, REPRODUCE OR DIVULGE TO OTHER PARTIES WITHOUT THE WRITTEN CONSENT OF EFD.

REVISIONS					
ZONE	REV.	DESCRIPTION	BY	CHK	RELEASE NO.
	A01	INITIAL RELEASE	JT		DR6241
					DATE
					2/27/04



COMPLETED ASSEMBLY

NOTES:
1.

ITEM NO.	PART NUMBER	DESCRIPTION	QUAN.
1	700813-1	MOUNTING PLATE-DB02/DB03	1
2	700813-2	SPACER PLATE-DB02/DB03	1
3	A914	TRIPLE BRACKET, DB03	1
4	A915	VALVE PLATE, 03-0234-01	3
5	HM5	NUT - HEX, M5	4
6	HM5X16MM-FH	SCREW - M5X16MM, FH, SS	4
7	HW4-40X3/4	SCREW-PHILLIPS MS FH SS	4

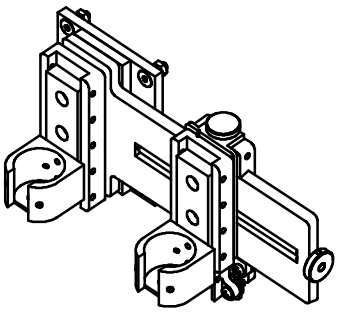
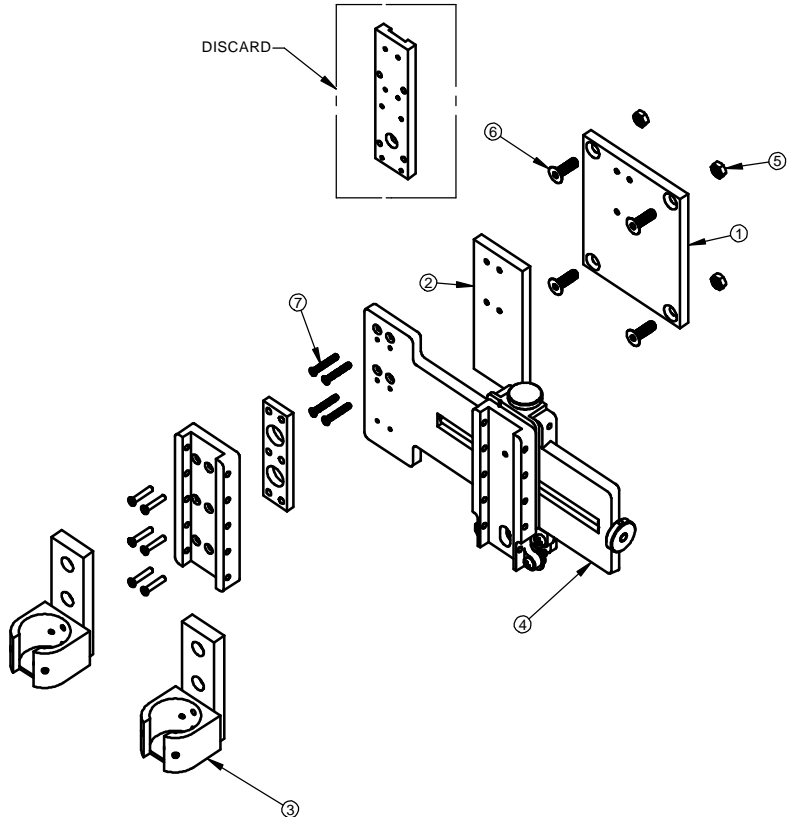
ENGLISH		EFD		977 WATERMAN AVE.	
ALL DIMENSIONS IN INCHES EXCEPT AS NOTED		EFD		EAST PROVIDENCE	
UNLESS OTHERWISE NOTED		ORIGINAL RELEASE		RHODE ISLAND 02914	
* INTERPRET DRAWING PER ASME Y14.5M-1994		REFERENCE NO.		TRIPLE VALVE MOUNTING KIT	
* PERFECT FORM AT MMC REQUIRED FOR INTERRELATED FEATURES		DRAWN BY:			
* STANDARD TOLERANCES		DATE:			
XXX = ±.010 XXX = ±.005 XXX = ±.005 ANGULAR = ±1°		CHECKED BY:			
* BREAK ALL CORNERS .005 / .005		APPROVED BY:			
* THREAD LENGTH DIMENSIONS ARE FULL THREAD		SCALE:			
* MACHINED SURFACES: 125		THIRD ANGLE PROJECTION			

SIZE	PART NO.	REV.
C	700843	A01
SHEET 1 OF 1		

4 1 3 2 1

PROPRIETARY NOTICE THIS DRAWING IS EFD PROPERTY, CONTAINS PROPRIETARY INFORMATION AND MUST BE RETURNED UPON REQUEST. DO NOT CIRCULATE, REPRODUCE OR DIVULGE TO OTHER PARTIES WITHOUT THE WRITTEN CONSENT OF EFD.

REVISIONS					
ZONE	REV.	DESCRIPTION	BY	CHK	RELEASE NO.
	A01	ORIGINAL RELEASE	JT		DR6240
					DATE
					2/27/2004



COMPLETED ASSEMBLY

NOTES:
1.

ITEM NO.	PART NUMBER	DESCRIPTION	QUAN.
1	700813-1	MOUNTING PLATE-DB02/DB03	1
2	700813-2	SPACER PLATE-DB02/DB03	1
3	79007	MOUNTING BLOCK ASSEMBLY - 790	2
4	A913	DUAL BRACKET, DB02	1
5	HM5	NUT - HEX, M5	4
6	HM5X16MM-FH	SCREW - M5X16MM, FH, SS	4
7	HW4-40X3/4	SCREW-PHILLIPS M5 FH SS	4

ENGLISH		EFD®		977 WATERMAN AVE.	
ALL DIMENSIONS IN INCHES EXCEPT AS NOTED		A SCREW COMPANY		EAST PROVIDENCE	
UNLESS OTHERWISE NOTED		ORIGINAL RELEASE		RHODE ISLAND 02914	
* INTERPRET DRAWING PER ASME Y14.5M-1994		REVISION NO.		DUAL AUGER VALVE MOUNTING KIT	
* PERFECT FORM AT MMC REQUIRED FOR INTERRELATED FEATURES		DR6240			
* STANDARD TOLERANCES		DRAWN BY:			
* XXX = ±.010 XXX = ±.005 XXX = ±.005 ANGULAR = .5°		JT			
* BREAK ALL CORNERS .005/.005		DATE:		2/27/04	
* THREAD LENGTH DIMENSIONS ARE FULL THREAD		CHECKED BY:			
* MACHINED SURFACES: 12.5		APPROVED BY:			
THIRD ANGLE PROJECTION		SCALE:		1:2	

SIZE	PART NO.	REV.
C	700844	A01
SHEET 1 OF 1		

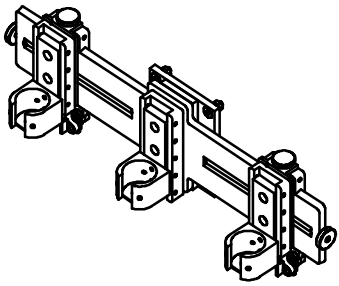
4 1 3 2 1

PROPRIETARY NOTICE

THIS DRAWING IS EFD PROPERTY, CONTAINS PROPRIETARY INFORMATION AND MUST BE RETURNED UPON REQUEST. DO NOT CIRCULATE, REPRODUCE OR DIVULGE TO OTHER PARTIES WITHOUT THE WRITTEN CONSENT OF EFD.

REVISIONS					
ZONE	REV.	DESCRIPTION	BY	CHK	RELEASE NO.
	A01	INITIAL RELEASE	JT		DR6241
					DATE
					2/27/04

DISCARD



COMPLETED ASSEMBLY

NOTES:
1.

ITEM NO.	PART NUMBER	DESCRIPTION	QUAN.
1	700813-1	MOUNTING PLATE-DB02/DB03	1
2	700813-2	SPACER PLATE-DB02/DB03	1
3	79007	MOUNTING BLOCK ASSEMBLY - 790	3
4	A914	TRIPLE BRACKET, DB03	1
5	HM5	NUT - HEX, M5	4
6	HM5X16MM-FH	SCREW - M5X16MM, FH, SS	4
7	HW4-40X3/4	SCREW-PHILLIPS MS FH SS	4

ENGLISH		EFD		977 WATERMAN AVE. EAST PROVIDENCE RHODE ISLAND 02914	
ALL DIMENSIONS IN INCHES EXCEPT AS NOTED		ORIGINAL RELEASE		DATE	
UNLESS OTHERWISE NOTED		DR6241		2/27/04	
* INTERPRET DRAWING PER ASME Y14.5M-1994		DRAWN BY:		DATE	
* PERFECT FORM AT MMC REQUIRED FOR INTERRELATED FEATURES		JT		2/27/04	
* STANDARD TOLERANCES		CHECKED BY:		DATE	
.XX = ±.010 .XXX = ±.005					
* BREAK ALL CORNERS .005/.005		APPROVED BY:		DATE	
* THREAD LENGTH DIMENSIONS ARE FULL THREAD					
* MACHINED SURFACES: 125		SCALE		1:2	
THIRD ANGLE PROJECTION		SIZE		PART NO.	
		C		700845	
				REV	
				A01	

TRIPLE AUGER
VALVE MOUNTING
KIT

SHEET 1 OF 1